



PERSATUAN GEOLOGI MALAYSIA

WARTA GEOLOGI

NEWSLETTER of the GEOLOGICAL SOCIETY OF MALAYSIA



Jilid 40
No. 3-4

JULY-DECEMBER
2014

Volume 40
No. 3-4

ISSN 0126 - 5539

PP2509/07/2013(032786)



PERSATUAN GEOLOGI MALAYSIA
Geological Society of Malaysia

Council 2014/2015

| | |
|----------------------------|--|
| President : | Dr. Mazlan Madon |
| Vice President : | Mr. Abd Rashid Jaapar |
| Secretary : | Mr. Lim Choun Sian |
| Assistant Secretary : | Mr. Nicholas Jacob |
| Treasurer : | Mr. Ahmad Nizam Hasan |
| Editor : | Assoc. Prof. Dr. Ng Tham Fatt |
| Immediate Past President : | Prof. Dr. Joy Jacqueline Pereira |
| Councillors : | Assoc. Prof. Askury Abd Kadir Dr. Meor Hakif Amir Hassan Mr. Mohd Badzran Mat Taib Dr. Nur Iskandar Taib Mr. Robert Wong Dr. Samsudin Hj Taib Mr. Tan Boon Kong Dr. Tanot Unjah |

The Geological Society of Malaysia was founded in 1967 with the aim of promoting the advancement of geoscience, particularly in Malaysia and Southeast Asia. The Society has a membership of about 600 local and international geoscientists.

Warta Geologi (Newsletter of the Geological Society of Malaysia) is published quarterly by the Society. Warta Geologi covers short geological communications and original research, as well as reports on activities and news about the Society. It is distributed free-of-charge to members of the Society. Further information can be obtained from:

The Editor
Geological Society of Malaysia
c/o Department of Geology,
University of Malaya,
50603 Kuala Lumpur, Malaysia
Tel: 603-79577036 Fax: 603-79563900
Email: geologicalsociety@gmail.com

Warta Geologi

Newsletter of the Geological Society of Malaysia

Editor-in-Chief

Ng Tham Fatt (University of Malaya)

Managing Editor

Ralph L. Kugler (University of Malaya)

Editorial Board

Prof. Dr. Abdul Rahim Samsudin
(Universiti Kebangsaan Malaysia)

Prof. Dr. Azman A. Ghani
(University of Malaya)

Prof. Dr. Basir Jasim
(Universiti Kebangsaan Malaysia)

Assoc. Prof. Dr. Chow Weng Sum
(Universiti Teknologi Petronas)

Prof. Dr. Felix Tongkul
(Universiti Malaysia Sabah)

Prof. Emeritus Dr. H.D. Tjia
(Universiti Kebangsaan Malaysia)

Prof. Dato' Dr. Ibrahim Komoo
(Universiti Malaysia Terengganu)

Prof. Dr. J.J. Pereira
(Universiti Kebangsaan Malaysia)

Prof. Dr. John K. Raj
(University of Malaya)

Prof. Dr. Lee Chai Peng
(University of Malaya)

Prof. Dr. Mohd Shafeea Leman
(Universiti Kebangsaan Malaysia)

Mr. Tan Boon Kong
(Consultant)

Prof. Dr. Wan Hasiyah Abdullah
(University of Malaya)

Dato' Yunus Abdul Razak
(Minerals & Geoscience Department
Malaysia)

Secretariat

Anna Lim

CATATAN GEOLOGI GEOLOGICAL NOTES

Barremian-Aptian radiolaria from Chert-Spilite Formation, Kudat, Sabah

WAN NURSAIEDAH WAN ISMAIL*, SANUDIN HJ. TAHIR & BASIR JASIN

Program of Geology, School of Science and Technology,
Universiti Malaysia Sabah, 888999 Kota Kinabalu, Sabah

*Email address: wnursaiedah@gmail.com

Abstract: Radiolarian chert in study area is from ophiolitic rocks association and occurs as alternate thin layer with siliceous shale. The radiolaria were retrieved from their siliceous matrix with hydrofluoric acid before analyzed using optical microscope and scanning electron microscope. Several species of radiolarian were identified and their age ranging from Barremian to Aptian (Early Cretaceous). Geochemical analysis of radiolarian chert shows very high silica content ($>70\%$) followed by Fe_2O_3 as the second most abundant element. The result indicates that the radiolarian chert is from basalt association. The low content of CaO suggests that the chert were deposited below calcite compensation depth. Other elements such as Al_2O_3 , TiO_2 , Na_2O , K_2O , MgO , MnO and P_2O_5 are less than 3%. The three major elements Fe_2O_3 , Al_2O_3 and TiO_2 are used for interpreting the environment of chert deposition based on diagram of Murray, which suggests that the chert was deposited on ocean crust and their occurrence as thinly bedded chert indicates that the material was episodically transported by weak turbidity current.

Keywords: chert, radiolaria, micropaleontology, Sabah, Early Cretaceous

INTRODUCTION

Radiolarian chert at Bukit Pangaraban, Kudat (Figure 1) is related to the ophiolite association. The ophiolite association is comprising of diabase, basalt, lava pillow and spilite overlain by radiolarian chert. The association represents oceanic crust sequence of basic and ultrabasic rocks. The radiolarian chert has been studied by previous researchers (Basir *et al.*, 1985; Basir and Sanudin 1988; Basir, 1990). The aim of this paper is to review the taxa of radiolarian in the chert and to interpret the environment of deposition based on geochemical data.

PALEONTOLOGY OF RADIOLARIA

Five samples (K1-K5) were taken from a quarry at Bukit Pangaraban. The samples were crushed into 0.5 cm fragments. The radiolaria were retrieved from the rocks using hydrofluoric acid technique (Pessagno and Newport, 1972). The residue was washed with hydrogen peroxide to remove the remaining matrix. The decanting and counting of fossils were done using an optical microscope and the microphotographs of their morphology were taken using a scanning electron microscope. The stratigraphic distribution of the radiolaria indicates that the cherts in Kudat are ranging from Barremian to Aptian in Early Cretaceous (124-113 Ma).

The samples from Bukit Pangaraban yielded a number of individual taxa. The most common species are *Thanarla*

pacifica, *Dictyomitra communis*, *Pseudoeucyrtis hanni* and *Podobursa typical*. This indicates that the age of the cherts is ranging from Barremian to Aptian (Basir, 2000). Microphotographs of radiolaria are shown in Figure 2.

GEOCHEMICAL ANALYSIS

Major elements compositions of five chert samples (K1-K5) were analysed using X-ray fluorescence method. The results are shown in Table 1. Generally, all the samples contain a high percentage of SiO_2 followed by Fe_2O_3 and Al_2O_3 . Three primary elements (Fe_2O_3 , Al_2O_3 and TiO_2)

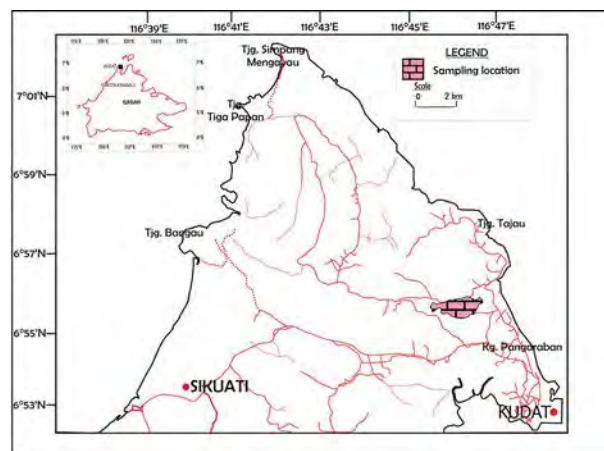


Figure 1: Sample locality in Kudat, Sabah.

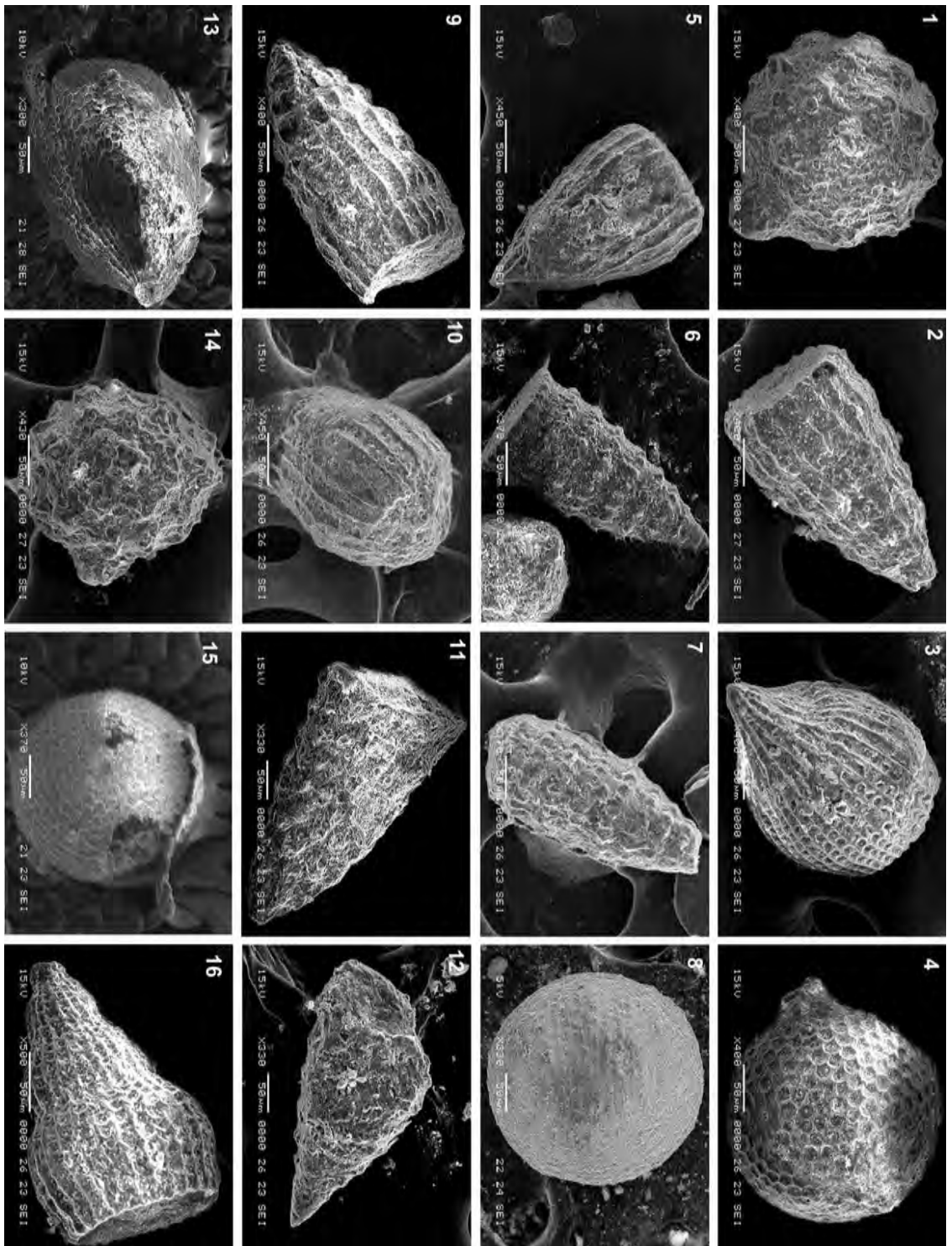


Figure 2: Barremian-Aptian radiolarian from Chert-Splite Formation, Bukit Pangaraban, Kudat. (scale bar is indicated in each microphotograph). 1- *Conosphaera tuberosa* (Tan Sin Hok); 2- *Dicyonitira communis* (Squinabol); 3- *Thamaria pulchra* (Squinabol); 4- *Sethocapsa orca* (Foreman); 5- *Thamaria browneri* (Tan Sin Hok); 6- *Pseudodicyonitira carpatica* (Lozmiack); 7- *Xitus spicularius* (Aliev); 8- *Holocryptocanium barhai* (Dunnitica); 9- *Dicyonitira communis* (Squinabol); 10- *Thamaria pulchra* (Squinabol); 11- *Hemicyptocapsa capitata* (Tan Sin Hok); 12- *Pseudocyrtis hanni* (Tan); 13- *Archaeodicyonitira lacrimula* (Foreman); 14- *Hiscocapsa gruterinki* (Tan Sin Hok); 15- *Cryptanthorella conara* (Foreman); 16- *Thamaria pseudodecora* (Tan Sin Hok)

Table 1: Major elements compositions of chert samples K1-K5 from Kudat, Sabah.

| | SiO ₂ | Al ₂ O ₃ | Fe ₂ O ₃ | TiO ₂ | MgO | CaO | Na ₂ O | K ₂ O | MnO | P ₂ O ₅ | LOI | Total |
|-----------|------------------|--------------------------------|--------------------------------|------------------|------|------|-------------------|------------------|------|-------------------------------|------|--------|
| K1 | 91.50 | 2.30 | 2.97 | 0.15 | 0.35 | 0.05 | 0.50 | 0.52 | 0.02 | 0.01 | 1.60 | 99.97 |
| K2 | 91.60 | 2.11 | 2.96 | 0.18 | 0.34 | 0.04 | 0.48 | 0.56 | 0.09 | 0.01 | 1.80 | 100.17 |
| K3 | 92.52 | 2.55 | 1.80 | 0.20 | 0.34 | 0.05 | 0.50 | 0.35 | 0.02 | 0.03 | 1.81 | 100.17 |
| K4 | 92.33 | 2.90 | 1.80 | 0.10 | 0.35 | 0.02 | 0.59 | 0.58 | 0.02 | 0.04 | 1.80 | 100.53 |
| K5 | 92.19 | 2.98 | 1.72 | 0.19 | 0.33 | 0.02 | 0.50 | 0.55 | 0.01 | 0.03 | 1.90 | 100.42 |

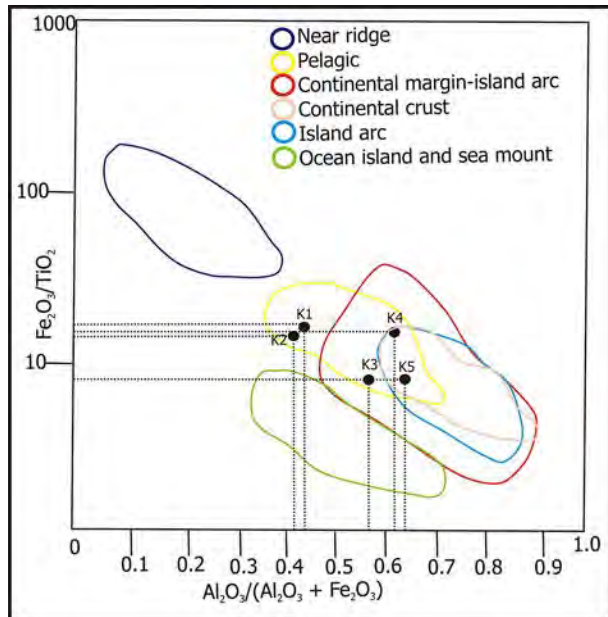


Figure 3: Geochemical data of chert plot on Fe₂O₃/TiO₂ vs Al₂O₃/(Al₂O₃+Fe₂O₃) discrimination diagram of Murray (1994).

are used to interpret the deposition environment for chert by Murray (1994).

ENVIRONMENT OF DEPOSITION

The ophiolitic rocks association and the geochemical data indicates that the chert from Kudat was deposited on oceanic crust. Geochemical data from the chert were plotted on the Fe₂O₃/TiO₂ vs Al₂O₃/(Al₂O₃+Fe₂O₃) discrimination diagram of Murray (1994). All

sample points are located on pelagic domain (Figure 3), suggesting that the depositional environment was deep oceanic environment near the spreading centre. The occurrence of siliceous beds of cherts indicates the presence of hemipelagic argillaceous material that was transported episodically by weak turbidity currents into the environment.

CONCLUSION

The age of radiolarian chert from Bukit Pangaraban, Kudat is ranging from Barremian to Aptian. The ophiolitic chert in the study area represents the oceanic crust that was formed during Early Cretaceous and this association represents the oldest rocks in Sabah.

REFERENCES

Basir Jasin, 1990. Kajian radiolaria dan geokimia rijang di utara Sabah. Prosiding Persidangan Sains Bumi dan Masyarakat. Bangi: 244-256. Universiti Kebangsaan Malaysia.
 Basir Jasin, 2000. Geological significance of radiolarian chert in Sabah. Universiti Kebangsaan Malaysia.
 Basir Jasin & Sanudin Tahir, 1988. Barremian Radiolaria from the Chert-Spilite Formation, Kudat, Sabah. Sains Malaysiana, 18. 57-75.
 Basir Jasin, Sanudin Tahir & Abd Rahim Samsudin, 1985. Lower Cretaceous Age of Radiolarian from the Chert-Spilite Formation, Kudat Sabah. Warta Geologi, 11(4):161-162.
 Murray, R.W., 1994. Chemical criteria to identify the depositional environment of chert: general principles and applications. Sedimentary Geology, 90(3-4) 213-232
 Pessagno, E.A. & Newport, R.L. 1972. A technique for extracting Radiolaria from radiolarian cherts. Micropaleontology, 18(2), 231-234.

Retirement Lecture No. 4

Groundwater contributions in times of drought – Role of JMG

Mohammed Hatta B. Abd. Karim (Minerals and Geoscience Department, JMG)

13 August 2014

Department of Geology, University of Malaya

The talk on Groundwater was presented by Sdr. Mohammed Hatta B. Abd. Karim (JMG) on 13th August, 2014, at Department of Geology, University of Malaya, Kuala Lumpur.

This talk is the 4th in the series of Retirement Lectures initiated in 2006, with the objective of capturing retirees/imminent retirees to talk on their life-time work experience and expertise.

Sdr Hatta presented a comprehensive view of JMG's role in the investigations of groundwater resources in the country, and provisions of such resources in places that require them badly, especially in times of drought/dry seasons. Groundwater potential maps for all the states, detailed analyses and monitoring of water qualities, R&D including groundwater modelling, etc. are some of the various scopes of works conducted by JMG. These data base and publications are all accessible to the general public and other government agencies, such as the Water Works departments.

As usual, lively discussions followed the presentation.

We thank Sdr Hatta for his contribution to the Society's activities, and in reactivating the Retirement Lectures series which has been dormant for a while. We also wish him joy and happiness in his retirement years ahead.

Tan Boon Kong,

Chairman, W/G on Engineering Geology, Hydrogeology & Environmental Geology

CERAMAH TEKNIK TECHNICAL TALK

Occurrence of Early Eocene to Middle Eocene planktic foraminifera from bedded shale at the Suang Pai quarry, Kudat, Sabah: A preliminary interpretation

Junaidi Asis (UMS)

Effects of moisture and clay minerals on the strength of soil along Kota Belud – Ranau Road, Tamparuli, Sabah

Mohd Ali Yusuf (UMS)

16 May 2014, School of Science & Technology, UMS

Technical talk series 1 (Sabah zone) was held on the 16th May 2014 at the Bilik Mesyuarat Utama (BMU), Faculty of Science and Natural Resources (FSSA-Fakulti Sains dan Sumber Alam), Universiti Malaysia Sabah (UMS), organized in collaboration with the Geological Society of Malaysia (GSM) and the FSSA, UMS. The technical talk was officiated by the Dean of FSSA, UMS, Assoc. Prof. Dr. Baba Musta, followed by opening from Mr. Rodeano Hj. Roslee, GSM-regional representative of Sabah zone.

Technical talk series 1 (Sabah zone) is aimed to provide a platform for discussing the current geosciences research conducted in Sabah, Malaysia. This event attracted participants from various government agencies namely the Mineral and Geosciences Department of Malaysia (JMG), Meteorological Department of Malaysia (JMM), Department of environmental protection of Sabah (JAPAS), Kota Kinabalu City Hall (DBKK), Public Works Department of Sabah (JKR), Environment Department of Malaysia (JAS), as well as researchers, academicians and students from UMS.

PERTEMUAN PERSATUAN (MEETINGS OF THE SOCIETY)

Two technical papers were presented by Sdr. Junaidi Asis (UMS) and Sdr. Mohd Ali Yusuf Mohd Husin (UMS).

Sdr. Junaidi Asis has presented a paper entitled "Occurrence of Early Eocene to Middle Eocene planktic foraminifera from bedded shale at the Suang Pai quarry, Kudat, Sabah: a preliminary interpretation". In this research, four samples of shale from the Suang Pai quarry, Kudat, Sabah have been collected and processed according to micropaleontological technique. Sdr. Junaidi found that all samples contain an abundance of planktic and benthic foraminifera. A total of sixteen taxa of planktic foraminifera have been identified and eleven selected species are used for age determination. He concluded that the planktic foraminiferal assemblage represents an age of Ypresian to Bartonian (Early Eocene to Middle Eocene). The age and characteristic of the shale unit can be interpreted as part of the Crocker Formation.

Sdr. Mohd Ali Yusuf Mohd Husin has presented a paper entitled "Effects of moisture and clay minerals on the strength of soil along Kota Belud – Ranau Road, Tamparuli, Sabah". The main objective of the study is to determine the effects of moisture, mineral and microstructure on the strength of soil. In this research, the soil samples were collected from the major road of Kota Belud – Ranau, Sabah. Moisture analysis was applied by using manipulation of Unconfined Compression Test by treating the samples with 5% of increment and decrement of moisture from the optimum moisture content. The analysis yielded the strength of soil ranges from 50.5 kPa to 131 kPa for optimum moisture, 20.5 kPa to 50 kPa for 5% increment and 98 kPa to 210.5 kPa for 5% decrement. He found that the sandy soil have a higher shear strength when subjected to less moisture and clay soil have a lower shear strength when more moisture is added. As a conclusion, this research shows that effect of moisture is characterize by the mineral and microstructure properties of the sample and it has a direct impact on the shear strength of soil.

The presentation by the two speakers was followed by a question and answer session. The technical talks received a very good response from the 38 participants. Closing remarks and a summary of the technical talk were given by Mr. Rodeano Roslee. Besides that, token of appreciation were delivered to the presenters by Prof. Dr. Sanudin Hj. Tahir.

Rodeano Roslee

Regional Presentatives of GSM (Sabah zone), Universiti Malaysia Sabah



Pentafsiran sub-strata dan penentuan potensi akuifer dalam batuan sedimen Kumpulan Dent, Lahad Datu Sabah dengan menggunakan kaedah geofizik gunaan

Hardianshah Saleh (UMS)

6 June 2014

School of Science & Technology, UMS

Technical talk series 2 (Sabah zone) was held on the 6th June 2014 at the Bilik Seminar, Faculty of Science and Natural Resources (FSSA-Fakulti Sains dan Sumber Alam), Universiti Malaysia Sabah (UMS), organized in collaboration with the Geological Society of Malaysia (GSM) and the FSSA, UMS. The technical talk was officiated by the Mr. Rodeano Hj. Roslee, GSM-regional representative of Sabah zone.

The aim of the technical talk is to provide a platform for discussing the current geosciences research conducted in Sabah, Malaysia. This event attracted participants from various government agencies, namely the Mineral and Geosciences Department of Malaysia (JMG), Meteorological Department of Malaysia (JMM), Department of environmental protection of Sabah (JAPAS), Kota Kinabalu City Hall (DBKK), Public Works Department of Sabah (JKR), Environment Department of Malaysia (JAS), as well as researchers, academicians and students from UMS. The technical talk was presented by Sdr. Hardianshah Salleh (UMS).

Sdr. Hardianshah Salleh talk entitled “Pentafsiran sub-strata dan penentuan potensi akuifer dalam batuan sedimen Kumpulan Dent, Lahad Datu Sabah dengan menggunakan kaedah geofizik gunaan”. In this research, correlation of the interpreted VES, ERI, and IP with the lithologic logs from the borehole sections in the study area produced seven geo-electrical profiles and labelled as S1 (in Sebahat Formation area), G1, G2, G3, G4, G5 (in Ganduman Formation area) and T1 (in Togopi Formation area). He found that the Ganduman Formation consists of four different lithologic layers with variable thicknesses. The first layer representing topsoil, the second layer representing thick sandstone layer partly associated with clay and calcareous lenses, the third layer representing mudstone layer and the fourth layer representing sandstone layer. Meanwhile, the Togopi Formation consists of topsoil layer, followed by clay and sandstone layers with fractured limestone blocks. Results of the study indicate that the Sebahat Formation dominated by aquitard and aquiclude layers. As conclusions, a good aquifer layers was interpreted was formed in thick sandstone layer in Ganduman Formation and limestone with sandy layer in Togopi Formation.

The presentations were followed by a question and answer session. The technical talks were well received and attended by 35 participants. Closing remarks and a summary of the technical talk were given by Mr. Rodeano Roslee. Besides that, token of appreciation was also delivered to the presenters by him.

Rodeano Roslee

Regional Representatives of GSM (Sabah zone), Universiti Malaysia Sabah



FIRST CIRCULAR

GEOLOGICAL SOCIETY OF MALAYSIA
 PERSATUAN GEOLOGI MALAYSIA



**NATIONAL
 GEOSCIENCE
 CONFERENCE 2015**

Perdana Hotel, Kota Bharu, Kelantan
31 July – 1 August 2015

**“Geoscience for Societal Benefits and
 National Development”**

Co-organisers:



Universiti Malaysia Kelantan
 Department of Minerals and Geoscience Malaysia
 Perbadanan Menteri Besar Kelantan

CALL FOR PAPERS

Deadlines

Submission of extended abstract: **30th April 2015**
 Early Registration: **30th May 2015**

Registration

All intending participants are advised to register early to facilitate the planning of the Conference. Registration fee will cover conference material, lunch, and refreshment. Payment of crossed cheque or bank draft is acceptable and should be made payable to the “Geological Society of Malaysia”. Payment can also be made by banking in directly to the **Geological Society of Malaysia, Standard Chartered Bank**, current account no. **794 1054 02263**. Please send the bank-in-slip through the e-mail to the Society (geologicalsociety@gmail.com) for verification.

| Registration Fee | Early Registration | Late Registration |
|------------------------------------|--------------------|-------------------|
| Presenters and participants | | |
| - Full/associate/life members | RM 150 | RM 200 |
| - Non-members | RM 200 | RM 250 |
| - Student members | RM 50 | RM 80 |
| - Student non-members | RM 100 | RM 120 |
| Spouse/family of members | RM 100 | RM 120 |
| Children below 5 years | free | free |

Accommodation

Accommodation is at participant's own expense. Participants are advised to make early room reservations. For reservation, please contact the hotel:

Perdana Hotel, Jalan Mahmood, 15200 Kota Bharu, Kelantan

Tel: +609 745 8888

Fax: +609 748 8855

E-mail: reservations@hotelperdanakotabharu.com

Website: www.hotelperdanakotabharu.com

Other hotels around Kota Bharu:

- Riverview Hotel
- Pacific Hotel
- Renaissance Hotel

REGISTRATION FORM
NATIONAL GEOSCIENCE CONFERENCE 2015

Name: _____
 Profession: _____
 Organisation: _____
 Address: _____
 Tel/HP: _____ Fax: _____
 E-mail: _____
 Membership Type: Full/associate/life/student/
 non-member*

I would like to attend NGC 2015
 I would like to join the Post-Conference Fieldtrip
 I would like to present the following paper(s):
 1. _____ (oral/poster*)
 2. _____ (oral/poster*)

Name and age (for children) of accompanying person (s)
 1. _____
 2. _____
 My spouse would like to join the Spouse Programme
 If “yes”, write the name and phone no. of the spouse here.
 Name of the spouse: _____
 Tel/HP: _____

GEOLOGICAL SOCIETY OF MALAYSIA PERSATUAN GEOLOGI MALAYSIA **NATIONAL GEOSCIENCE CONFERENCE 2015**

The Geological Society of Malaysia (GSM) is pleased to announce that the National Geoscience Conference 2015 (NGC 2015), 28th in the annual conferences, will be held at the Perdana Hotel, Kota Bharu, Kelantan from 31 July to 1 August 2015. The Conference is the premier geoscientific event in Malaysia, which is well-attended by geoscientists from academia as well as the public and private sectors. NGC 2015 is co-organised by Universiti Malaysia Kelantan (UMK), the Department of Mineral and Geoscience (JMG) Malaysia, and Perbadanan Menteri Besar Kelantan (PMBK).

Theme: “Geoscience for Societal Benefits and National Development”

Challenges of the 21st Century are numerous and multifarious. While we are now assuring a sustained industrial growth for creation of employment, this has to be synchronized with environmental issues. Climate change and global warming are other big issues which have gained global significance in this Century and needs to be understood properly before proposing mitigation measures. Provision of safe drinking water to every household is another challenge that most of the developing and underdeveloped countries are facing. Natural resources – such as fossil fuels and minerals - are gradually depleting without significant additions of new discoveries. Natural hazards continue to be unpredictable and hazards due to anthropogenic factors, like urbanization, industrialization and deforestation, are becoming more and more frequent. Geoscience can play a role in understanding and mitigating all these issues. It has always contributed to the society and national development, but the time has come for Geoscientists to be more innovative rather than peripheral and conventional.

Programme

The technical programme of NGC 2015 consists of oral and poster presentations on all aspects of geoscience, mainly related to the theme. Presentations will be delivered by keynote speakers on topics relevant to the theme and of national and international interest. There will be a one-day Post-NGC 2015 Fieldtrip to several sites in Kelantan and a Student Session (Undergraduate Seminar).

Call for Papers

Once again, we seek your support to ensure the success of NGC 2015 in Kelantan. Participants are invited to present papers on original research either in English or Bahasa Malaysia for the Technical Sessions. Contributors may submit more than one papers, but the Organizing Committee has the right to select only one paper by any first author for oral presentations, while the rest will be for poster presentations. So, please come and share your knowledge, ideas, experiences, and expertise for the benefit of the country and future generations.

Those who would like to present paper(s) are required to submit an extended abstract(s). An extended abstract should be between 500 – 750 words, up to 3 figures and/or tables and at least 3 references. All accepted extended abstracts will be distributed to all presenters and participants of NGC 2015. Please send your extended abstract(s) to one of the following addresses:

secretariat.ngc2015@gmail.com (UMK)
geologicalsociety@gmail.com (GSM)

Post-NGC 2015 Field Trip

Location: 1. Some flood-impacted areas, Kuala Krai

2. Gunung Stong

Date : 2 August 2015 (Sunday)

Number of participants: Maximum 30

Charges: RM 70 per person

Student Session (Undergraduate Student Seminar)

Location: Perdana Hotel, Kota Bharu, Kelantan

Date : 1 August 2015 (Saturday)

For the first time in the history of NGC, the Organizing Committee will provide a Student Session which is an Undergraduate Student Seminar as a part of the NGC 2015. We will accommodate Geoscience/Geology students all over Malaysia and possibly some other countries to participate in this one-day seminar to share their ideas, knowledge and research by presenting their papers. The students will meet fellow Geoscience/Geology students from various universities and engage in a professional-like atmosphere in the seminar. Prizes will be given to three best presenters each for oral and poster presentations.

Spouse Programme

Location: Tax-free market and Masjid Beijing, Rantau Panjang

Date : 1 August 2015 (Saturday)

Number of participants: Maximum 30

Charges: RM 20

For inquiries, please contact:

Secretariat

National Geoscience Conference 2015 (NGC 2015)

Geoscience Programme

Faculty of Earth Science

Universiti Malaysia Kelantan

UMK Jeli Campus, Locked Bag No.100

17600 Jeli, Kelantan, Malaysia

Tel: 09-947 7155 HP: 016-304 8860 Fax: 09-947 7032

E-mail: secretariat.ngc2015@gmail.com

Or

Geological Society of Malaysia

c/o Department of Geology

University of Malaya

50603 Kuala Lumpur, Malaysia

Tel: (+603) 7957 7036 Fax: (+603) 7956 3900

Email: geologicalsociety@gmail.com

NEW MEMBERSHIP

Full Member

1. Aina Nadia bt Abdul.
2. Amin Noorasid bin Abdul
3. Aziz Amiman bin Madun
4. Basiron bin Jalil
5. Carlos Finlay
6. Chin Soon Mun
7. Chong Chee Meng
8. Goh Shin Mei
9. Habibah binti Hj Jamil
10. Hasrizal bin Shaari
11. Hong Tzy Yang
12. Jalil Azrul Normi bin Idris
13. James anak Bachat
14. Khor Wei Chung
15. Mohamad Hussein bin Jamaluddin
16. Mohamd Mohamed Abdo Aly Elsaadany
17. Mohammad Hishamuddin Ismail
18. Mohd Aliff bin Ayoub
19. Mohd Muzamil bin Mohd Hashim
20. Mohd Paizal bin Radzil
21. Mohd Razif bin Saleh
22. Mohd Yazid bin Mohd Dan
23. Muhammad Safwan bin Zulkifli
24. Noor Farahin binti Mohamad Morshidi
25. Nor Sara Izzatti binti Bashah
26. Noran Azwakhir Shaarani
27. Nur Firdaus binti Ishak
28. R.P Major
29. Sarmiza M Sapiai
30. Shee Kein Wei
31. Wan Mohd Aiman Adli bin Wan Ramlan

Associate Member

1. Abdul Halim bin Abdul Latiff
2. Chan Chee Ming
3. Hassan bin Sabirin
4. Khairul Faizee bin Mohd Zin
5. Raidi bin Hashim
6. Rini Asnida binti Abdullah
7. Suzanne McGowan

Student Member

1. Adelynna Sherley anak Penguang
2. Ahmad Syazwi Ahmad Shukri
3. Anis Suhaila binti Mokhtar
4. Asha Kling Lawrence
5. Azmi bin Abu Bakar
6. Azmiah binti Jamil
7. Cheng Wei Yet
8. Elanni binti Md Affandi
9. Ezan Sahizzah bt Sah Nuddin
10. Fatin Fariha binti Mohd Wafa
11. Hazwan Syahmi bin Hashim
12. Imran Omar bin David Scott Siegmund
13. Jaineh Lingi
14. Johan bin Zainal Abidin
15. Juliza binti Rehan
16. Karthigeyan a/l Al-Ramanathan
17. Kee Shook Peng
18. Lee Fui Ting
19. Mimi Nur Syazwani binti Ahmad Daud
20. Muhammad Hafifi bin Badrudin
21. Ng Zhi Lin
22. Nurul Azreena Quraishah binti Ahmad Effendi
23. Ong Sze Jiet
24. Rapidah binti Mat Stafa
25. Salsabila binti Nazari
26. Sim Shi
27. Siti Nur Amirah binti Ismail

CHANGE OF ADDRESS

Wan Fuad Wan Hassan

No 5, Lot 3084, Sungai Merab Luar,
3000 Kajang, Selangor

Zulkipli Che Kasim

No 5, Jalan Wangsa Budi 3, Wangsa Melawati
53300 Kuala Lumpur

Dr. Abdul Ghani Rafek,

11, SS21/12, Damansara Utama,
47400 Petaling Jaya, Selangor

Ahmad Ashraf Abdul Ghafar

B303, Blok B Delima,
Kuarters Kediaman Hospital Kajang
Kawasan Perindustrian Sg Chua
43000 Kajang, Selangor

Maarten Wiemer

Emmapark 30
2641EL, Pijnacker, The Netherlands

Zuraida Mat Isa

Energy Quest Sdn Bhd, Level 18, Office Suite
UOA Centre, No. 19, Jalan Pinan
50450 Kuala Lumpur

Denis Tan

No. B-1-1, Skyvilla Residences,
MJC, Batu Kawah New Township,
93250 Kuching, Sarawak

Dan Spancers

3900 East Dartmouth Avenue
Denver, Co 80210, USA

Tan It Beng

No 10, Jalan Emas Putih,
41000, Klang, Selangor

M.Hilmi M.Khassim

PTU/E/S, Sarawak Shell Berhad
Locked Bag No.1, Lutong,
98009 Miri, Sarawak

Serge Jean

ROC Oil Malaysia, Menara Darussalam, Level 12
12 Jalan Pinang, 50450 Kuala Lumpur

Ibrahim Lah

Geoscience Solutions Sdn. Bhd.,
E-5-2, Jalan Serai Wangi M 16/M,
Alam Avenue 2, Seksyen 16,
40000 Shah Alam, Selangor

Bulletin of the Geological Society of Malaysia (1967 - 2013) and Warta Geologi (1994 - 2014) can be downloaded from gsm.org.my

All Bulletins, Warta Geologi and GSM Newsletter can be downloaded from <https://gsmpubl.wordpress.com/>

Dear Members

Please update your contact details by sending your email address, telephone no. and fax no. to :
geologicalsociety@gmail.com



UPCOMING EVENTS

April 15-17 2015: SEAPEX 2015: For the Industry: By the Industry, Singapore. Contact: peter.woodroof@petrofac.com or chris.howells@tgs.com. Website: www.seapexconf.org

April 16 - 17 2015: AAPG Fractured Reservoirs: Geological, Geophysical and Engineering Tools to Crack Them. Sicily, Italy. <https://europeevents.aapg.org/ehome/94905/sicily2015/AbstractSubmission/>

April 27 - 29 2015: AIPG 2015 - The Expanding World of Unconventional Shale Hydrocarbon Resources. Worthington, Ohio. <http://www.aipg.org/>

April 29 2015: Global Mining Water Management Congress 2015. Denver, Colorado, USA. <http://www.cim.org/en/News-and-Events/Events/EventsList/2015/4/GlobalMiningWaterManagementCongress2015.aspx>

May 10 - 13 2015: CIM - Canadian Institute of Mining, Metallurgy and Petroleum Annual Convention, Montreal, Quebec. <http://convention.cim.org/>

May 10 - 13 2015: International Society for Rock Mechanics (ISRM) 13th International Congress on Rock Mechanics: Innovations in Applied and Theoretical Rock Mechanics, Montreal, Canada. <http://www.isrm2015.com/>

May 11 - 15 2015: 36th International Symposium on Remote Sensing of Environment "Observing the Earth, Monitoring the Change, Sharing the Knowledge". Berlin, Germany. <http://www.isrse36.org/>

May 17-19 2015: 18th Asia Oil & Gas Conference. Contact: email: aogc@icep.com.my

May 19 - 21 2015: Global Soil Security Symposium, Texas A&M University, College Station, Texas, USA. <https://www.soils.org/meetings/global-soil-security>

May 25 - 28 2015: Asia Mining Congress. Suntec City, Singapore. <http://www.cim.org/en/News-and-Events/Events/EventsList/2015/5/AsiaMiningCongress2015.aspx>

May 25 - 29 2015: International conference on groundwater vulnerability, Ustron, Poland. <http://khgi.wnoz.us.edu.pl/vulnerability.html>

May 31 - 3 June 2015: AAPG 2015 Annual Convention & Exhibition. Denver, Colorado, USA. <http://ace.aapg.org/2015>

June 2-4, 2015: Asian Oil, Gas & Petrochemical Engineering Exhibition, Kuala Lumpur, Malaysia. Website: www.oilandgas-asia.com

June 8 - 9 2015: Water Management for Shale and Tight Gas Resources. Perth, Western Australia. <http://www.iah.org.au/events/watershale2015/>

June 9 - 10 2015: International Workshop on Supporting Future Earth with Geo-information, Beijing, China. http://ngcc.sbsm.gov.cn/article/isprs_cn/

June 10 - 12 2015: ISFOG 2015 - 3rd International Symposium on Frontiers in Offshore Geotechnics (ISFOG), Oslo, Norway. <http://www.ngi.no/en/Selected-topics/ISFOG-2015---Oslo/>

June 11 - 13 2015: Hard Rock Aquifers: Up to date concepts and practical applications. La Roche-sur-Yon, Vendee, France. <http://www.cfh-aih.fr/soclelendee2015/index.php/en/>

June 14 - 19 2015: AGU: Chapman Conference on the Evolution of the Asian Monsoon and its Impact on Landscape, Environment and Society: Using the Past as the Key to the Future. Hong Kong, Hong Kong. <http://chapman.agu.org/monsoon/>

June 20 - 26 2015: International Conference on Groundwater in Karst, Birmingham, United Kingdom. <http://www.birmingham.ac.uk/generic/kgatb/index.aspx>

June 28 June - 1 July 2015: American Rock Mechanics Association - 49th US Rock Mechanics/Geomechanics Symposium. San Francisco, California, USA. <http://www.armasymposium.org/>

July 7 - 10 2015: GI_Forum 2015 – Geospatial Minds for Society, Salzburg, Austria. www.gi-forum.org

July 19 - 21 2015: 5th Conference on Geology and Geophysics (ICGG 2015), Shanghai, China. <http://www.engii.org/ws/Home.aspx?id=615>

July 19 -23 2015: STRATI2015 - 2nd International Congress on Stratigraphy, sponsored by the IUGS Commission on Stratigraphy. Graz, Austria. <http://strati2015.uni-graz.at>

August 7 - 15 2015: XVIII International Congress on Carboniferous and Permian. Kazan, Russia. www.iccp2015.ksu.ru

August 17 - 20 2015: International Soil Conference on Sustainable Uses of Soil in Harmony with Food Security. Phetchaburi, Thailand. http://www.idd.go.th/WEB_ISC2015/Index.html

August 17 - 22 2015: International Geographical Union (IGU) Regional Conference, Moscow, Russia. <http://www.igu2015.ru/>

August 24 - 26 2015: 11th International Symposium on Rock Fragmentation by Blasting, Sydney, Australia. <http://fragblast11.org/>

September 13 - 16 2015: AAPG 2015 International Conference & Exhibition. Melbourne, Australia. <http://ice.aapg.org/2015>

September 13 - 17 2015: XVI ECSMGE 2015 “Geotechnical Investigation for Infrastructure and Development”, International Society for Soil Mechanics and Geotechnical Engineering (ISSMGE), 16th European Conference on Soil Mechanics and Geotechnical Engineering, Edinburgh, United Kingdom. <http://xvi-ecsmge-2015.org.uk/>

September 20 - 25 2015: 8th Hutton Symposium on Granites and Related Rocks. Florianopolis, Brazil. <http://www.hutton8.com.br/>

Sep 22-26 2015: International congress on “Geoheritage Inventories: Challenges, Achievements and Perspectives” (GEO INV 2015), National Museum of Natural history of Toulouse (France). karine.jamin@marie-toulouse.fr

September 24 - 25 2015: Workshop on Volcanic Rocks and Soils - an ISRM Specialised Conference, Isle of Ischia, Italy. <http://www.wvrs-ischia2015.it/>

Sep 26-27, 2015: 10th Asian Regional Symposium of IAEG, Kyoto, Japan. “Geohazard and Engineering Geology” <http://www.jsseg.or.jp/2015ars/> Email: 2015ARS-JAPAN@jsseg.or.jp

September 27 - 30 2015: Society of Economic Geologists (SEG/CODES) 2015 Conference: World-Class Ore Deposits: Discover to Recovery. Hobart, TAS, Australia. <http://www.seg2015.org/>

October 5 - 7 2015: 10th workshop of the International Lithosphere Programme task force on Sedimentary Basins Sedimentary Basins, Tokyo, Japan. email: ishiyama@eri.u-tokyo.ac.jp

October 7 - 10 2015: EUROCK 2015 - ISRM European Regional Symposium - the 64th Geomechanics Colloquy, Salzburg, Austria. <http://www.eurock2015.com/en/>

October 16 - 21 2015: 15th Water Rock Interaction, Evora, Portugal. <http://www.wri15portugal.org/>

October 26 - 31 2015: SEG International Exposition and 84th Annual Meeting. Denver, Colorado, USA. www.seg.org/web/annual-meeting-2014/overview

Oct 27-29 2015: International Conference on Engineering Geology in New Millennium, New Delhi, India. Email: geolraju@gmail.com

November 2 - 4 2015: 6ICEGE - 6th International Conference on Earthquake Geotechnical Engineering, Christchurch, New Zealand. <http://www.6icege.com/>

November 3 - 5 2015: Australian Groundwater Conference 2015. Canberra, Australia. <http://www.groundwater.com.au/pages/australian-groundwater-conference-2015>

November 9 - 13 2015: The 15th Asian Regional Conference on Soil Mechanics and Geotechnical Engineering - New Innovations and Sustainability,

Kyushu, Japan. <http://jgskyushu.jp/xoops/uploads/15ARC/>

November 15 - 18 2015: VIII Pan American Conference on Soil Mechanics and Geotechnical Engineering, Buenos Aires, Argentina. <http://conferenciasba2015.com.ar/website/viii-south-american-congress-on-rocks-mechanics/welcome/>

May 10 - 12 2016: 7th In-Situ Rock Stress Symposium 2016 - an ISRM Specialised Conference, Tampere, Finland. <http://www.isrm.net/conferencias/detalhes.php?id=3297&show=conf>

May 25 - 27 2016: GEOSAFE: 1st International Symposium on Reducing Risks in Site Investigation, Modelling and Construction for Rock Engineering - an ISRM Specialized Conference, X'ian, China. <http://www.isrm.net/conferencias/detalhes.php?id=3289&show=conf>

June 19 - 22 2016: AAPG 2016 Annual Convention & Exhibition, Calgary, Alberta, Canada. <http://www.aapg.org/events/conferences/ace/announcement/articleid/5662/aapg-2016-annual-convention-exhibition>

August 27 - September 5 2016: The 35th International Geological Congress: Cape Town, South Africa. Danie Barnado, Secretary-General: 35th IGC. barnardo@geoscience.org.za; <http://www.35igc.org>

August 29 - 31 2016: EUROCK 2016 - The 2016 ISRM International Symposium - Rock Mechanics & Rock Engineering: From Past to the Future, Ürgüp-Nevşehir, Turkey. <http://eurock2016.org/>

October 1 2016: ARMS 9 - the 9th Asian Rock Mechanics Symposium - ISRM Regional Symposium, Bali, Indonesia. <http://www.isrm.net/conferencias/detalhes.php?id=3268&show=conf>

October 16 - 18 2016: Recent Advances in Rock Engineering - RARE 2016 - an ISRM Specialised Conference, Bangalore, India. <http://www.isrm.net/conferencias/detalhes.php?id=3312&show=conf>



GEOLOGICAL SOCIETY OF MALAYSIA PUBLICATIONS

- Bulletin 1** (1968). Studies in Malaysian Geology. 79 p. Edited by P.H. Stauffer. (out of stock)
- Bulletin 2** (1968). Bibliography and Index of the Geology of West Malaysia and Singapore. 152 p. D.J. Gobbett. Price: RM5.00.
- Bulletin 3** (1970). Papers in Geomorphology and Stratigraphy (with Bibliography supplement). 146 p. Edited by P.H. Stauffer. Price: RM5.00.
- Bulletin 4** (1971). Papers in Petrology, Structure and Economic Geology. 100 p. Edited by P.H. Stauffer. Price: RM5.00.
- Bulletin 5** (1973). The Search for Tungsten Deposits. 70 p. K.F.G. Hosking. (out of stock)
- Bulletin 6** (1973). Proceedings, Regional Conference on the Geology of Southeast Asia. A Collection of papers, Kuala Lumpur, March, 1972. 334 p. Edited by B.K. Tan. Price: RM5.00.
- Bulletin 7** (1974). A collection of papers on geology. 138 p. Edited by B.K. Tan. Price RM5.00.
- Bulletin 8** (1977). A collection of papers on geology. 158 p. Edited by T.T. Khoo. (out of stock)
- Bulletin 9** (1977). The relationship between granitoids and associated ore deposits of the Circum Pacific region. 277 p. Edited by J.A. Roddick & T.T. Khoo. (out of stock)
- Bulletin 10** (1978). A collection of papers on geology. 95 p. Edited by C.H. Yeap. (out of stock)
- Bulletin 11** (1979). Geology of tin deposits. A collection of papers presented at the International Symposium on Geology of Tin Deposits. 393 p. Edited by C.H. Yeap. (out of stock)
- Bulletin 12** (1980). A collection of papers on geology. 86 p. Edited by G.H. Teh. (out of stock)
- Bulletin 13** (1980). A collection of papers on geology of Malaysia and Thailand. 111 p. Edited by G.H. Teh. Price RM5.00.
- Bulletin 14** (1981). A collection of papers on geology of Southeast Asia. 151 p. Edited by G.H. Teh. (out of stock)
- Bulletin 15** (1982). A collection of papers on geology. 151 p. Edited by G.H. Teh. (out of stock)
- Bulletin 16** (1983). A collection of papers on geology. 239 p. Edited by G.H. Teh. (out of stock)
- Bulletin 17** (1984). A collection of papers on geology. 371 p. Edited by G.H. Teh. (out of stock)
- Bulletin 18** (1985) Special issue on Petroleum Geology. 209 p. Edited by G.H. Teh. & S. Paramanathan. (out of stock)
- Bulletins 19** (1986). GEOSEA V Proceedings Fifth Regional Congress on Geology, Mineral and Energy Resources of SE Asia. Vol. I. 652 p. Edited by G.H. Teh & S. Paramanathan. Members: RM30.00; Non-members: RM60.00
- Bulletins 20** (1986). GEOSEA V Proceedings Fifth Regional Congress on Geology, Mineral and Energy Resources of SE Asia. Vol. II. 881 p. Edited by G.H. Teh & S. Paramanathan. Members: RM30.00; Non-members: RM60.00
- Bulletin 21** (1987). Special issue on Petroleum Geology. 271 p. Edited by G.H. Teh. Price: RM20.00.
- Bulletin 22** (1988). Special issue on Petroleum Geology. 272 p. Edited by G.H. Teh. Price: RM20.00.
- Bulletin 23** (1989). A collection of papers on the geology of Malaysia, Thailand and Burma. 215 p. Edited by G.H. Teh. Price: RM10.00.
- Bulletin 24** (1989). A collection of papers presented at Annual Geological Conference 1987 & 1988. 199 p. Edited by G.H. Teh. Price: RM10.00.
- Bulletin 25** (1989). Special issue on Petroleum Geology. 161 p. Edited by G.H. Teh. Price: RM20.00.
- Bulletin 26** (1990). A collection of papers presented at Annual Geological Conference 1989 and others. 223 p. Edited by G.H. Teh. Price: RM10.00.
- Bulletin 27** (1990). Special issue on Petroleum Geology 292 p. Edited by G.H. Teh. Price: RM20.00.
- Bulletin 28** (1991). Special issue on Petroleum Geology 292 p. Edited by G.H. Teh. Price: RM20.00.
- Bulletin 29** (1991). A collection of papers presented at Annual Geological Conference 1990 and others. 255 p. Edited by G.H. Teh. Price: RM10.00
- Bulletin 30** (1992). Annotated bibliography of the geology of the South China Sea and adjacent parts of Borneo. 90 p. N.S. Haile. Price: RM10.00.
- Bulletin 31** (1992). A collection of papers presented at Annual Geological Conference 1991 and others. 176 p. Edited by G.H. Teh. Price: RM10.00.
- Bulletin 32** (1992). Special issue on Petroleum Geology. 283 p. Edited by G.H. Teh. Price: RM30.00.
- Bulletin 33** (1993). Proceedings Symposium on Tectonic Framework and Energy Resources of the Western Margin of the Pacific Basin. 419 p. Edited by G.H. Teh. Price: RM40.00.
- Bulletin 34** (1993). Bibliography and Index – Publications of the Geological Society of Malaysia 1967-1993. 181 p. Compiled by T.F. Ng. Edited by G.H. Teh. Price: RM20.00.
- Bulletin 35** (1994). A collection of papers presented at Annual Geological Conference 1992 and others. 174 p. Edited by G.H. Teh. (out of stock)
- Bulletin 36** (1994). Special issue on Petroleum Geology. 186 p. Edited by G.H. Teh. Price: RM50.00.
- Bulletin 37** (1995). Proceedings AAPG-GSM International Conference 1994. Southeast Asian Basins: Oil and Gas for the 21st Century. 506 p. Edited by G.H. Teh. Price: RM60.00.
- Bulletin 38** (1995). A collection of papers presented at GSM Annual Geological Conference 1994 and others. 190 p. Edited by G.H. Teh. Price: RM30.00.
- Bulletin 39** (1996). A collection of papers on geology. 258 p. Edited by G.H. Teh. (out of stock)
- Bulletin 40** (1997). A collection of papers presented at Annual Geological Conference 1996 and others. 247 p. Edited by G.H. Teh. Price: RM30.00.
- Bulletin 41** (1997). A collection of papers presented at Petroleum Geology Conference 1996 and others. 165 p. Edited by G.H. Teh. (out of stock)
- Bulletin 42** (1998). Papers from Petroleum Geology Conference 1997, Seminar on Tertiary Basins of Peninsular Malaysia and others. 268 p. Edited by G.H. Teh. Price: RM50.00.
- Bulletin 43** (1999). Papers from GEOSEA '98 (Ninth Regional Congress on Geology, Mineral and Energy Resources of Southeast Asia). 698 p. Edited by G.H. Teh. Price: RM70.00.
- Bulletin 44** (2000). A collection of papers from Annual Geological Conference 1999. Western Belt & Paleozoic of Peninsular Malaysia Seminar 1999 & others. 178 p. Edited by G.H. Teh. Price: RM30.00
- Bulletin 45** (2002). Annual Geological Conference 2002. Conference Issue. 375 p. Edited by G.H. Teh, Ismail Yusoff, Azman A. Ghani & T.F. Ng. Price: RM50.00.
- Bulletin 46** (2003). Annual Geological Conference 2003 Issue. 489 p. Edited by G.H. Teh, Alex Unya Ambun, Askury Abd. Kadir & T.F. Ng (out of stock)
- Bulletin 47** (2003). Petroleum Geology Conference & Exhibition 2002. 179 p. Edited by G.H. Teh. Price: RM30.00.
- Bulletin 48** (2004). Annual Geological Conference 2004 Issue. 130 p. Edited by Lee Chai Peng, Mohd. Shafeea Leman, J.J. Pereira & T.F. Ng. (out of stock)
- Bulletin 49** (2006). Collection of Geological Papers. 167 p. Edited by K.K. Liew, Nur Iskandar Taib & T.F. Ng. Price: RM30.00.
- Bulletin 50** (2007). Bibliography and Index of GSM Publications 1994 – 2004. 160 p. Compiled by Robert B. Tate. Price: RM30.00
- Bulletin 51** (2005). Annual Geological Conference 2005 Issue. 199 p. Edited by Nur Iskandar Taib. Price: RM30.00
- Bulletin 52** (2006). Collection of geological papers. 135 p. Edited by Nur Iskandar Taib. Price: RM30.00.
- Bulletin 53** (2007). Collection of geological papers. 128 p. Edited by T.F. Ng, Nur Iskandar Taib & Joy J. Pereira. Price: RM30.00.
- Bulletin 54** (2008). Collection of geological papers. 169 p. Edited by T.F. Ng, Nur Iskandar Taib & Samsudin Hj Taib. Price: RM30.00.
- Bulletin 55** (2009). Collection of geological papers. 100 p. Edited by T.F. Ng & Y.L. Lau. Price: RM30.00.
- Bulletin 56** (2010). Collection of geological papers. 132 p. Edited by Mohd Shafeea Leman, Basir Jasin, T.F. Ng & C.S. Lim. Price: RM30.00.
- Bulletin 57** (2011). Collection of geological papers. 84 p. Edited by T.F. Ng, R.L. Kugler, J.J. Pereira & Ibrahim Komoo. Price: RM30.00.
- Bulletin 58** (2012). Collection of geological papers. 96 p. Edited by T.F. Ng & M. Johansson. Price: RM30.00.
- Bulletin 59** (2013). Collection of geological papers. 107 p. Edited by A.J. Reedman, Nguyen Thi Minh, C.S. Lim & T.F. Ng. Price: RM30.00.
- Bulletin 60** (2014). Charles S. Hutchison Memorial Issue. 99 p. Edited by Lee Chai Peng & T.F. Ng. Price: RM30.00.
- Proceedings of the Workshop on Stratigraphic Correlation of Thailand and Malaysia. Volume 1 Technical papers.** (1983) Jointly published by Geological Society of Thailand and Geological Society of Malaysia. 383 p. (out of stock)
- Proceedings Annual Geological Conference 2000.** 435 p. Edited by G.H. Teh, Joy J. Pereira and T.F. Ng. Price: RM60.00.
- Proceedings Annual Geological Conference 2001.** 320 p. Edited by G.H. Teh, Mohd. Shafeea Leman and T.F. Ng. Price: RM50.00.
- Geology of Borneo Island (2001) (CD, Map (2 sheets) and explanatory notes.** Compiled by Robert B. Tate. Price: RM60.00.
- Stratigraphic Lexicon of Malaysia** (2004). By Lee Chai Peng, Mohd. Shafeea Leman, Kamaludin Hassan, Bahari Md. Nasib & Roshidah Karim. 162 p. Price: RM30.00.
- Geological Evolution of Southeast Asia** (1996) Reprinted Edition. By C. S. Hutchison. 368 p. (out of stock)
- Geological Evolution of Southeast Asia** (2007) (Second Edition) by C. S. Hutchison. 433 p. Price: RM100.00; Student :RM50.00.
- Geology of Peninsular Malaysia (2009)** 479 p. Hardcover. Edited by C.S. Hutchison & D.N.K. Tan. Inclusive of Geological Map of Peninsular Malaysia. Price: Member RM150.00; Student Member RM70.00; Non-Member RM200.00
- Geological Map of Peninsular Malaysia (2008).** Scale 1:1 000 000. Price: RM50.00; Student: RM20.00.
- Warta Geologi** (Newsletter of the Geological Society of Malaysia). Price: RM5.00 per issue from July 1966.

All prices quoted are not inclusive of postage. Please write in for details on postage. Allow 8-10 weeks for delivery. For orders, please write to the Society and you will be invoiced. Cheques, money orders and bank drafts must accompany all orders.

Orders should be addressed to:

Geological Society of Malaysia,
c/o Department of Geology, University of Malaya,
50603 Kuala Lumpur, MALAYSIA
Tel: 603-79577036, Fax: 603-79563900
E-mail: geologicalsociety@gmail.com

BULLETIN

PERSATUAN GEOLOGI MALAYSIA

CHARLES S. HUTCHISON
MEMORIAL ISSUE



Bulletin of the
GEOLOGICAL SOCIETY OF MALAYSIA

DECEMBER 2014

No. 60

Price (excluding postage): RM30.00
Please send your enquiry to : geologicalsociety@gmail.com

Geological Evolution of South-East Asia

Second Edition

CHARLES S. HUTCHISON

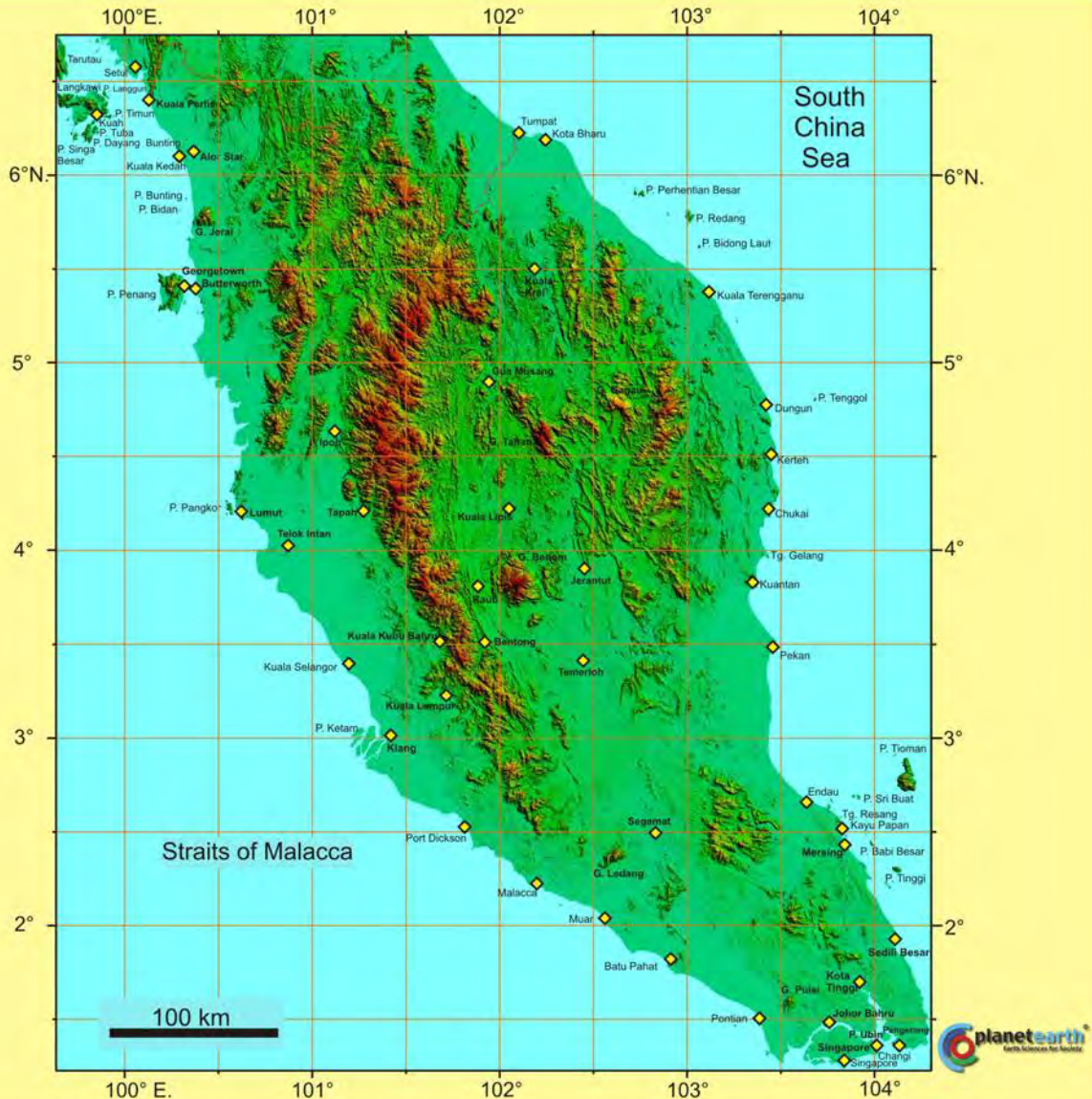


Geological Society of Malaysia
2007

Geological Evolution of South East Asia (2007) (Second Edition) by C.S. Hutchison
Price (excluding postage): RM100.00; Student : RM50.00
For overseas mail order please send your enquiry to : geologicalsociety@gmail.com

GEOLOGY OF PENINSULAR MALAYSIA

Editors: C. S. Hutchison and D. N. K. Tan



Published by the University of Malaya and the Geological Society of Malaysia



Sponsored by Murphy Oil Corporation
and the University of Malaya



Geology of Peninsular Malaysia (2009) Edited by C.S. Hutchison & D.N.K. Tan.
Hardcover, 479 pages. Inclusive of Geological Map of Peninsular Malaysia, scale 1 000 000.
Price (excluding postage): Member RM150.00; Student Member RM70.00; Non-Member RM200.00
For overseas mail order please send your enquiry to : geologicalsociety@gmail.com

Geological Society of Malaysia Publications

GENERAL POLICY

Papers should be as concise as possible. They may include original results of basic, applied and policy research of national or international significance, current reviews, or discussions on techniques, research programs, organisations, information, or national and international policies in geoscience.

SUBMISSION OF PAPERS

Only papers that have not been published elsewhere will be considered for publication. Authors must agree not to publish elsewhere a paper submitted and accepted. All papers will be subjected to review by two or more reviewers. Authors wishing to include published and unmodified figures or text passages are required to obtain permission from the copyright owner(s). Authors of English papers are strongly urged to have their manuscript edited for language before submission by a person whose first language is English.

The Editor reserves the right to reject all or any part of the paper submitted. The Geological Society of Malaysia assumes no responsibility for statements made by authors.

Three (3) original copies of the paper should be submitted to:

The Editor,
Geological Society of Malaysia
c/o Department of Geology
University of Malaya
50603 Kuala Lumpur,
Malaysia
Tel: (603) 7957 7036
Fax: (603) 7956 3900
Email: geologicalsociety@gmail.com

MANUSCRIPT

The paper can be written in Bahasa Malaysia (Malay) or English. For English papers, use either British or American spelling but not a combination of both. The paper should be checked thoroughly for spelling and grammar. The manuscript must be printed at 1.5 spacing in a single column on one side of A4 paper. All pages should be numbered. Length of paper should be between 3,000 and 6,000 words for the *Bulletin* and between 2,000 and 3000 words for *Warta Geologi*, excluding tables and illustrations. Metric units should be used and all non-standard symbols, abbreviations and acronyms must be defined.

TITLE

Title must be informative and reflects the content of the paper. Title in Malay should include an English translation. It should be concise (less than 20 words). Avoid using abbreviation in the title.

AUTHOR'S ADDRESS

Addresses of all authors must be provided. The addresses should be sufficient for correspondence. Please include email address, telephone and fax of the corresponding author.

ABSTRACT

Abstract in both Malay and English, each in one paragraph and should not exceed 300 words. It should clearly identify the subject matter, results obtained, interpretations discussed and conclusions reached.

KEYWORDS

Please include 3 to 8 keywords that best describe the content of the paper.

REFERENCES

In the text, references should be cited by author and year and listed chronologically (e.g. Smith, 1964; Jones *et al.*, 1998; Smith & Tan, 2000). For both Malay and English paper, all references must be listed in English. Title of non-English articles should be translated to English.

The list of references should only include articles cited in the text. The list should be arranged in alphabetical order. Please ensure that the reference list is complete and the bibliographical details are accurate. The references should be in the following manner:

Journal article:

Suntharalingam, T., 1968. Upper Palaeozoic stratigraphy of the area west of Kampar, Perak. *Geol. Soc. Malaysia Bull.*, 1, 1-15.

Book:

Hutchison, C.S., 1989. *Geological Evolution of South-east Asia*. Clarendon Press, Oxford. 368 p.

Chapter of book and Symposium volume:

Hosking, K.F.G., 1973. Primary mineral deposits. In: Gobbett, D.J. and Hutchison, C.S. (Eds.), *Geology of the Malay Peninsular (West Malaysia and Singapore)*. Wiley-Interscience, New York, 335-390.

Article in Malay:

Lim, C.H. & Mohd. Shafeea Leman, 1994. The occurrence of Lambir Formation in Ulu Bok Syncline, North Sarawak. *Geol. Soc. Malaysia Bull.*, 35, 1-5. (in Malay with English abstract)

TABLES

All tables should be cited in the text and numbered consecutively. Tables should have a title and a legend explaining any abbreviation or symbol used. Each table must be printed on a separate piece of paper. Do not insert the tables within the text. Data in tables should be aligned using tab stops rather than spaces. Avoid excessive tabulation of data.

ILLUSTRATIONS

Please make sure that all illustrations are useful, necessary and of good quality. A maximum of ten (10) illustrations (photographs, graphs and diagrams) are allowed and these should be cited in the text and numbered consecutively as Figures. The papers are usually published in black-and-white but it may sometimes be possible to include colour figures at the author's expense. The scales for maps and photomicrographs should be drawn on the figure and not given as a magnification. Originals should not be greater than A4 size and annotations should be capable of being reduced down to 50 percent. The caption should be listed on a separate piece of paper. Do not insert the illustration within the text.

SUBMISSION OF ELECTRONIC FILES

Authors are required to submit electronic files together with three hardcopies of their papers. Submission should be made using CD-ROM or by email. The CD-ROM should be accompanied with a listing of all files and the software (name and version) used. The file names should reflect the content of the files (e.g. Ali_Fig1.tif). Please make sure that the files and the hardcopies are the same.

PREFERRED SOFTWARE

Text: Microsoft Word. Please save in two versions, Word (.doc) and Rich Text Format (.rtf). Do not insert tables and illustration within the text.

Tables: Microsoft Word or Microsoft Excel. Please submit as separate files.

Illustrations – Vector Graphics: Adobe Illustrator (preferred), CorelDraw and Freehand. Final line thickness should be at least 0.5 point or 0.17 mm. For other software, please submit one copy in the native file format and export one copy as a PDF file with all fonts embedded and one copy as a high resolution TIFF or JPEG image.

Photographs or bitmap (raster) images: Adobe Photoshop. Please save as TIFF or PSD files. Save/scan line art at 600 to 1200 dpi and greyscale figures at 300 to 600 dpi. High resolution JPEG, TIFF or GIF files from other sources are also acceptable. The resolution must be high enough for printing at 300 dpi.

REPRINTS

Reprints are available at cost price provided that orders are placed prior to publication. Authors will also received a softcopy of the article published in .pdf format.

WARTA GEOLOGI PERSATUAN GEOLOGI MALAYSIA

Newsletter of the Geological Society of Malaysia

Jilid 40, No. 3-4 • Volume 40, No. 3-4 • July–December 2014

KANDUNGAN (CONTENTS)

CATATAN GEOLOGI (Geological Notes)

WAN NURSAIEDAH WAN ISMAIL, SANUDIN HJ. TAHIR & BASIR JASIN: Barremian-Aptian radiolaria from Chert-Spilitite Formation, Kudat, Sabah 59

PERTEMUAN PERSATUAN (Meetings of the Society)

RETIREMENT LECTURE NO. 4: Groundwater contributions in times of drought – Role of JMG by Mohammed Hatta B. Abd. Karim 62

TECHNICAL TALK: Junaidi Asis- Occurrence of Early Eocene to Middle Eocene Planktic Foraminifera from Bedded Shale at The Suang Pai Quarry, Kudat, Sabah; & MOHD ALI YUSUF: Effects of Moisture and Clay Minerals on the Strength of Soil Along Kota Belud – Ranau Road, Tamparuli, Sabah 62

TECHNICAL TALK: Hardianshah Saleh- Pentafsiran sub-strata dan penentuan potensi akuifer dalam batuan sedimen Kumpulan Dent, Lahad Datu Sabah dengan menggunakan kaedah geofizik gunaan 64

BERITA-BERITA PERSATUAN (News of the Society)

National Geoscience Conference 2015 — First Circular 65

New Membership 67

Change of Address 68

BERITA LAIN (Other News)

Upcoming Events 69

